

# MAPRI TODAY

The Mid-Atlantic Permanente Research Institute



### Inside this issue:

Executive Director Update	2
CTSU Award	3
Researcher Profiles	4-5
Registries	6
Current Studies	7-8
Publications: Manuscripts	9-10
Publications: Abstracts	11-12

# The Executive Director's Update

Dear Colleague,

MAPRI, has had a tremendous 2012 and looking forward to an even greater 2013! As you are probably aware, the Mid-Atlantic Permanente Research Institute (MAPRI) of Mid-Atlantic Permanente Medical Group, MAMPG, in collaboration with KPMAS, continued its measured and strategic growth in 2012. As the research arm of MAPMG and KPMAS, MAPRI's scientific scholarship addresses the clinical, policy and quality issues that confront our Permanente physicians and operation leaders daily.

MAPRI aims to give our MAPMG physicians data in areas of medical relevance. In addition, MAPRI wants to be a supportive partner in provider-initiated data queries and research projects. MAPRI's steadily increasing public profile--in the lay and professional media --strives to reinforce MAPMG's and KPMAS' positive brand recognition and be a research enterprise commensurate with a world-class medical care program.

The role of research in MAPMG is vital and robust. We increased our capacity and production in areas of health services and cardiovascular research as well as increased our research data capacity and health informatics research, clinically and research relevant registries, oncology epidemiology, and clinical trials. During 2012, we published and presented 12 manuscripts and abstracts as first author, and an additional 38 as co-authors. Furthermore, an additional 26 manuscripts and abstracts have already been accepted or submitted for publication or presentation in 2013. Please see Appendix A of our annual report (available at [www.kp.org/mapri](http://www.kp.org/mapri)) for a complete list of manuscripts and abstracts submitted, accepted, and published/presented in 2012 for MAPRI. Currently, we have 78 active studies.

MAPRI was one of the most successful recruiters for oncology clinical trials nationally in 2012! MAPRI has and continues to expand its clinical trials program for KPMAS. These trials provide our patients with access to cutting-edge medical care and the increased the medical knowledge of our providers. With the onset of the Affordable Care Act (healthcare reform), we anticipate requirements for expanded access to clinical trials and have hired additional personnel. Our program deploys six clinical research nurses, two research assistants, and extensive administrative support. We increased the number of clinical trials offered to our members, and became a full member of the National Surgical Adjuvant Breast and Bowel Project, NSABP, a National Cancer Institute sponsored cancer clinical trials collaborative. We have ongoing trials in the areas of hepatitis C, heart failure, neurology, and oncology. Please see Appendix B of the annual report for the clinical trials MAPRI managed in 2012.

In order to continue MAPRI's mission and vision, we hired two new research scientists in 2012 in the areas of health services (comparative health systems) and cardiovascular research. For 2013, MAPRI is anticipating programmatic expansion in the areas of health economics and biostatistical research. We will grow these and other established research programs, especially in the areas of HIV and hepatitis, oncology epidemiology, health disparities, and health informatics. Furthermore, we have plans to increase our grants and studies administration capacity, which further helps our program's development.

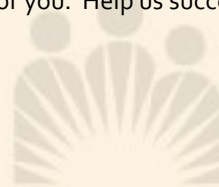
In 2012, MAPRI increased its collaborations with research entities outside of Kaiser Permanente, which included becoming a member of the HMO Research Network and greater involvement with the Cancer Research Network (CRN). MAPRI and KPMAS gained full membership in the NIAID-sponsored North American HIV Observational Cohort Collaboration (NA-ACCORD). We increased our interregional research collaborations, including the Center for Effectiveness and Safety Research. Within our region, MAPRI further developed the Clinician Research Committee, to greatly facilitate clinician initiated research studies. We also assisted resident and KPMAS-employee initiated research. We anticipate greater involvement in non-Kaiser Permanente collaborations in 2013.

MAPRI is extremely appreciative of the internal and external funding we received in order to accomplish our mission. We are grateful to KPMAS Community Benefits Program (CB) for its ongoing support, as well as MAPMG's support. Financial support outside of Kaiser Permanente increased significantly in 2012.

In 2013, MAPRI looks forward to continued deliberate and strategic growth. We will continue to honor our mission to address the clinical, health policy, and service questions perplexing MAPMG physicians, our medical program, and the healthcare system. Our ultimate goal is to improve the care experience of our patients and of the communities we serve. But essential to our success, is your engagement in MAPRI. Please feel free to send me your study ideas, thoughts on how we can improve our service, and topic areas we should explore. We are here for you. Help us succeed even more.

With Gratitude,

Michael Horberg





MAPMG Oncology Research Team received CTSU award for outstanding accrual in 2012!

The oncology clinical trials team, led by Dr. Leon Hwang has recently been recognized by CTSU for their outstanding effort in recruiting 20 oncology patients in 2012. MAPMG was one of the top recruiters in oncology clinical trials for CTSU in 2012.

CANCER TRIALS  
SUPPORT UNIT | CERTIFICATE OF  
OUTSTANDING  
ACHIEVEMENT

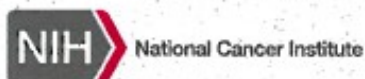
*Dr. Leon Hwang and Research Staff*

KAISER PERMANENTE-GAITHERSBURG MEDICAL CENTER

In recognition of your outstanding achievement in being one of the top enrolling investigators (20 patients enrolled) to trials available to all members of NCI's Cooperative Group Clinical Trials Network through the CTSU during the year 2012.

*J. Abrams*

JEFFREY ABRAMS, M.D.  
ASSOCIATE DIRECTOR  
CANCER THERAPY EVALUATION PROGRAM  
DIVISION OF CANCER TREATMENT & DIAGNOSIS





# Researcher

## *Meet the Team*



### Jared L. Maeda

Jared Lane Maeda, PhD, MPH joined MAPRI as a Research Scientist in September 2012 focusing on health services research/comparative health systems research. Previously, he examined the effects of market competition on hospital performance, geographic variations in care, and the growth in hospital inpatient costs. For example, in a prior study funded by the Agency for Healthcare Research and Quality, Jared found that market competition was associated with only small differences in hospital performance and that targeting evidence-based processes of care for chronic heart failure might have a stronger impact in improving patient outcomes.

At MAPRI, Dr. Maeda's research interest focuses on examining what specific aspects of Kaiser Permanente's integrated model of care leads to improved care delivery and patient outcomes and what "best practices" from Kaiser Permanente can be translated to the larger U.S. health care delivery system. Currently, Jared is a co-investigator on a study evaluating patient safety simulation modules and is leading the development of a rheumatoid arthritis disease registry. He is also collaborating on projects studying Kaiser Permanente's Clinical Decision Units (CDUs)/Emergency Departments and ALL/PHASE program.

Dr. Maeda completed his training in social behavioral sciences (masters) at Boston University and health policy and administration (PhD) at the University of Illinois at Chicago. In his spare time, he enjoys running, traveling, and trying new restaurants. If you would like to communicate directly with Dr. Maeda, he can be reached at: (301) 816-7273 or email at Jared.L.Maeda@kp.org.

#### Jared Maeda, MD, MPH

"Kaiser Permanente is a natural laboratory that offers unparalleled opportunities to conduct health services research. Working at MAPRI allows me to pursue meaningful research ideas that has a real-world impact in improving the care delivery to our patients."



# Profiles

## Jersey Chen

Jersey Chen, MD, MPH is a Research Scientist at the Mid-Atlantic Permanente Research Institute, Mid-Atlantic Permanente Medical Group. He also is a cardiologist who specializes in cardiac imaging with board certification in echocardiography, cardiac computed tomography (CT) and nuclear cardiology. He practices at the Capitol Hill hub.

His research focus is on outcomes and clinical epidemiology of cardiac disease, primarily heart failure and acute myocardial infarction. He has been awarded a grant from the Agency for Healthcare Research and Quality to examine regional differences in stress testing with imaging and its impact on downstream clinical and financial outcomes, as well as a grant from the American Heart Association to examine rates of cardiotoxicity after cancer therapy.

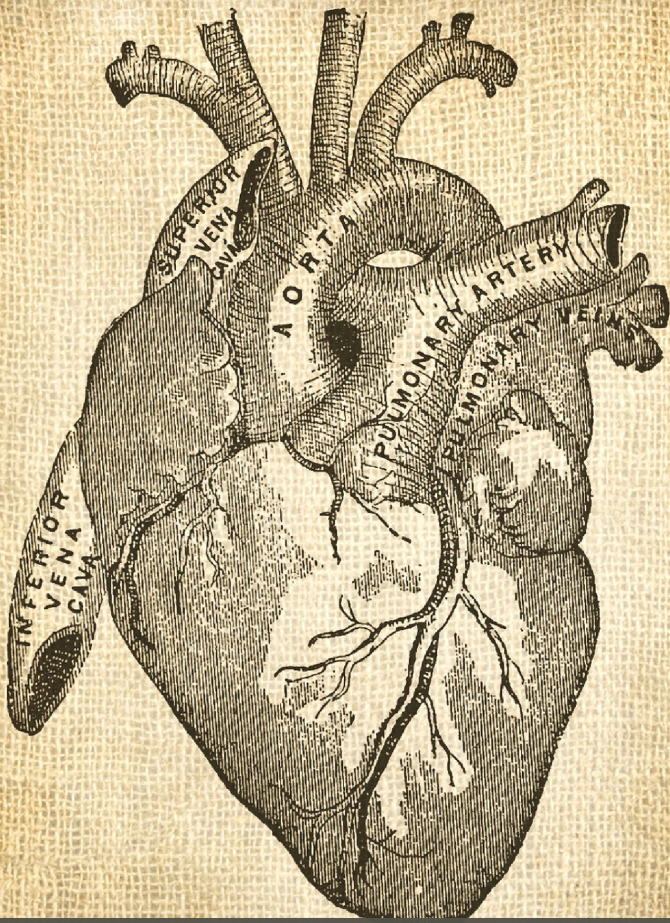
Dr. Chen received his undergraduate training at Harvard (Economics), and his medical training at Yale (Medicine and Epidemiology). Dr. Chen completed his internship, residency, and cardiology fellowship at the Beth Israel Deaconess Medicine Center in Boston. Prior to joining MAPRI he was an assistant professor at Yale Medical School. If you would like to communicate directly with Dr. Chen, he can be reached at: (301) 816-6134 or email at [Jersey.Chen@kp.org](mailto:Jersey.Chen@kp.org).



**Jersey Chen, MD, MPH**

Jersey has enjoyed working at MAPRI at the Regional Office, and in the Cardiology Department at Capitol Hill. He is merging his clinical interests in cardiac imaging with his research interests regarding the use and effectiveness of new imaging technologies.

# Heart Registry



Jersey Chen is leading the MAPRI effort to develop the KPMAS Heart Failure (HF) Registry. Heart failure is one of the leading causes of morbidity and mortality in the United States, and is one most common reason for hospital admission. Currently, the HF Registry contains data on over 10,000 members diagnosed with heart failure over the past decade—and includes detailed information on medication use, laboratory results and measures of cardiac function. The HF Registry will have important clinical applications for quality assessment and utilization management and will thus serve as a valuable asset for the HF care teams. On the research side, the HF registry will assist in identifying potential candidates for clinical trials, bringing the latest therapies to the KPMAS membership.

MAPRI leverages the large volume of clinical data collected on our patients to develop a number of disease specific Registries. All Registries have a designated Principal Investigator (often MAPMG clinician) responsible for identifying and defining the clinical questions used to develop the Registry. The Registries use information in Kaiser Permanente’s electronic databases, e.g., diagnoses, prescription drug orders and dispensing, to develop and validate algorithms for identifying disease specific patients. Once developed the Registries are updated regularly and are used to identify populations for potential research studies, clinical trials and for clinical treatment applications. A list of our Registries are as follows:

Title	PI	PI Contact	Analytic Staff
Asthma/COPD Registry	Michael Horberg	Michael.Horberg@kp.org	Faye Liu
Heart Failure Registry	Jersey Chen	Jersey.Chen@kp.org	Faye Liu
Hepatitis B Registry	Michael Horberg	Michael.Horberg@kp.org	Haihong Hu
Hepatitis C Registry	Michael Horberg	Michael.Horberg@kp.org	Haihong Hu
HIV Registry	Michael Horberg	Michael.Horberg@kp.org	Jackie Blank
Parkinson's Registry	Ejaz Shamim	Ejaz.A.Shamim@kp.org	Gina Ma
Tumor Registry	Chu-Ling Yu	Chu-Ling.X.Yu@kp.org	Jack Richter

## Cardiology

Treatment of Preserved Cardiac Function Heart Failure with an Aldosterone Antagonist ( <b>Closed to Enrollment</b> )	PI: Priti K. Sood, MD
	Contact: <u>Aundria Cosby</u>
	(301) 618-5941

## Hepatitis

A Phase III, open label study of once daily BI 201335 240mg for 24 weeks in combination with pegylated interferon-a (PegIFN) and ribavirin (RBV) in patients with genotype 1 chronic hepatitis C infection who failed a prior PegIFN/RBV treatment ( <b>Closed to Enrollment</b> )	PI: Bradley J. Winston, MD
	Contact: <u>Linda Steeby</u>
	(703) 922-1310

## Neurology

An Open-label, Multicenter Study of the Long-Term Efficacy, Safety and Tolerability of BOTOX (Onabotulinumtoxin A) for the Prophylaxis of Headaches in Adult Patients with Chronic Migraine	PI: Ejaz A. Shamim, MD
	Contact: <u>Aundria Cosby</u>
	(301) 618-5941

## Oncology

A Randomized Phase III Trial of Adjuvant Therapy Comparing Chemotherapy Alone (Six Cycles of Docetaxel Plus Cyclophosphamide or four Cycles of Doxorubicin Plus Cyclophosphamide Followed by Weekly Paclitaxel) to Chemotherapy Plus Trastuzumab in Women with Node-Positive or High-Risk Node-Negative HER2-Low Invasive Breast Cancer (NSABP B-47)	PI: Leon Hwang, MD
	Contact: <u>Diane Fisher</u>
	(240) 632-4284
Statin Polyp Prevention Trial in Patients with Resected Colon Cancer (NSABP P-5)	PI: Leon Hwang, MD
	Contact: <u>Diane Fisher</u>
	((240) 632-4284
Phase III Trial Comparing Trastuzumab Given Concurrently with Radiation Therapy and Radiation Therapy Alone for Women with HER2-Positive Ductal Carcinoma in Situ Resected by Lumpectomy (NSABP B-43)	PI: Leon Hwang, MD
	Contact: <u>Diane Fisher</u>
	(240) 632-4284
Randomized Phase III Study of Maintenance Therapy with Bevacizumab, Pemetrexed, or a Combination of Bevacizumab and Pemetrexed following Carboplatin, Paclitaxel and Bevacizumab for Advanced Non-Squamous NSCLC (ECOG E5508)	PI: Leon Hwang, MD
	Contact: <u>Diane Fisher</u>
	(240) 632-4284

## Oncology Continued

<p>A Phase III Trial of 6 versus 12 Treatments of Adjuvant FOLFOX plus CELECOXIB or PLACEBO for Patients with Resected Stage III Colon Cancer. (CALGB/SWOG C80702)</p>	<p>PI: Leon Hwang, MD  <u>Contact: Diane Fisher</u>                      (240) 632-4284</p>
<p>A Randomized Study to Prevent Lymphedema in Women Treated for Breast Cancer – Education Only (CALGB 70305)</p>	<p>PI: Amadea Tette, MD  <u>Contact: Diane Fisher</u>                      (240) 632-4284</p>
<p>Phase III Trial comparing the combination of Docetaxel plus Cyclophosphamide to Anthracycline-based chemotherapy regimens for women with node-positive or high risk node negative, HER2- Negative Breast Cancer (NSABP B-49)</p>	<p>PI: Leon Hwang, MD  <u>Contact: Diane Fisher</u>                      (240) 632-4284</p>
<p>A Phase III, Randomized Clinical Trial of Standard Adjuvant Endocrine Therapy +/- Chemotherapy in Patients with 1-3 Positive Nodes, Hormone Receptor-Positive and Her2-Negative Breast Cancer with Recurrence Score of 12 or Less (SWOG S1007)</p>	<p>PI: Leon Hwang, MD  <u>Contact: Diane Fisher</u>                      (240) 632-4284</p>
<p>A Randomized, Phase III Study of Standard Dosing versus Longer Dosing Interval of Zoledronic Acid in Metastatic Cancer, For Patients with Bone Metastases from Breast Cancer, Prostate Cancer or Multiple Myeloma (CALGB 70604) <b>(Closed to enrollment)</b></p>	<p>PI: Leon Hwang, MD  <u>Contact: Diane Fisher</u>                      (240) 632-4284</p>
<p>A Randomized Double-Blind, Placebo-Controlled Phase III Study of Early Versus Standard Zoledronic Acid to Prevent Skeletal Related Events in Men With Prostate Cancer Metastatic to Bone (CALGB 90202) <b>(Closed to enrollment)</b></p>	<p>PI: Leon Hwang, MD  <u>Contact: Diane Fisher</u>                      (240) 632-4284</p>
<p>Phase III Trial of Bisphosphonates as Adjuvant Therapy for Primary Breast Cancer ( SWOG-S0307) <b>(Closed to enrollment)</b></p>	<p>PI: Leon Hwang, MD  <u>Contact: Diane Fisher</u>                      (240) 632-4284</p>
<p>A Phase III Trial of Carboplatin and Paclitaxel Plus Placebo Versus Carboplatin and Paclitaxel Plus Concurrent Bevacizumab (NSC # 704865, IND #7921) Followed By Placebo, Versus Carboplatin and Paclitaxel Plus concurrent and Extended Bevacizumab, in Women With Newly Diagnosed, Previously Untreated, Suboptimal Advanced Stage Epithelial Ovarian, Primary Peritoneal Cancer, or Fallopian Tube Cancer ( GOG-0218) <b>(Closed to enrollment)</b></p>	<p>PI: Leon Hwang, MD  <u>Contact: Diane Fisher</u>                      (240) 632-4284</p>
<p>A Phase III, Adjuvant Trial Comparing Three Chemotherapy Regimens in Women With Node-Positive Breast Cancer: Docetaxel/Doxorubicin/Cyclophosphamide (TAC); Dose-Dense (DD) Doxorubicin/Cyclophosphamide Followed By DD Paclitaxel (DD AC-&gt;P); DD AC Followed By DD Paclitaxel Plus Gemcitabine (DD AC-&gt;PG) (NSABP B-38) <b>(Closed to enrollment)</b></p>	<p>PI: Leon Hwang, MD  <u>Contact: Diane Fisher</u>                      (240) 632-4284</p>
<p>A Clinical Trial Of Adjuvant Therapy Comparing Six Cycles Of 5-Fluorouracil, Epirubicin And Cyclophosphamide (FEC) To Four Cycles Of Adriamycin And Cyclophosphamide (AC) In Patients With Node-Negative Breast Cancer (NSABP B-36) <b>(Closed to enrollment)</b></p>	<p>PI: Leon Hwang, MD  <u>Contact: Diane Fisher</u>                      (240) 632-4284</p>
<p>A Phase III Trial Evaluating The Role Of Ovarian Function Suppression And The Role Of Exemestane As Adjuvant Therapies For Premenopausal Women With Endocrine Responsive Breast Cancer ( IBCSG 24-02) <b>(Closed to enrollment)</b></p>	<p>PI: Leon Hwang, MD  <u>Contact: Diane Fisher</u>                      (240) 632-4284</p>



# Published Manuscripts

(Since Last Issue 05-01-12)

1. **Chen J**, Wang H, Fazel R, Normand S-LT, Bradford D, Al-Mallah M, Cohen DJ, Spettell C, Fernandez J, Shaw L, Krumholz HM, Nallamothu BK. Does higher use of non-invasive testing improve the diagnostic yield of coronary angiography? (Submitted)
2. **Chen J**, Dharmarajan K, Wang Y, Krumholz HM. National trends in heart failure hospitalization rates, 2001-2009. *J Am Coll Cardiol*. 2013 (In Press).
3. **Fung V**, Price M, Busch AB, Landrum MB, Fireman B, Nierenberg A, Dow WH, Hui R, Frank R, Newhouse JP, Hsu J. Adverse clinical events among Medicare beneficiaries using antipsychotic drugs: Linking health insurance benefits and clinical needs. *Medical Care* ( In Press).
4. **Fung V**, Reed M, Price M, Brand RJ, Dow WH, Newhouse JP, Hsu J. Responses to Medicare drug costs among near-poor versus subsidized beneficiaries. *Health Services Research* (In Press).
5. **Gaglio B**, Shoup J, Glasgow RE. The RE-AIM framework: A systemic review of use over time. *Am J Public Health*. 2013 (In Press).
6. **Gaglio B**, Glasgow RE, Bull SS. Do patient preferences for health information vary by health literacy or numeracy? A qualitative assessment. *Journal of Health Communication*. 2012;17 Suppl 3:109-121.
7. **Horberg M**, Raymond B. Financial policy issues for HIV pre-exposure prophylaxis: Cost and access to insurance. *American Journal of Preventative Medicine*. 2013 (In Press).  
**Horberg MA**, Hurley LB, Towner WJ, Allerton MW, Tang BT, Catz SL, Silverberg MJ, Quesenberry CP. Influence of provider experience on antiretroviral adherence and viral suppression. *HIV AIDS (Auckl)*. 2012;4:125-133.
9. **Horberg M**, Hurley L, Towner W, Allerton M, Tang B, Catz S, Silverberg M, Quesenberry C. Determination of Optimized Multidisciplinary Care Team for Maximal Antiretroviral Therapy Adherence. *JAIDS*. Jun 1 2012;60(2):183-190.
10. **Yu CL**, Bhatti P, Ha M, Rajaraman P, Linet MS, Hutchinson A, Alexander BH, Doody MM, Chanock SJ, Sigurdson AJ. Interactions between common genetic variants & cigarette smoking before first live birth with breast cancer risk in U.S. radiologic technologists (Submitted).
11. **Yu CL**, Jones RR, Nuckols JR, Cerhan JR, Ross JA, Robien K, Ward MH. Farm residence and lymphohematopoietic cancers in the Iowa Women's Health Study (Submitted).
12. Althoff KN, Buchacz K, Hall H, Zhang J, Hanna D, Rebeiro P, Gange S, Moore RD, Kitahata M, Gebo K, Martin J, Justice A **Horberg M**, Hogg R, Sterling T, Cescon A, Klein M, Thorne J, Crane HM, Mugavero M, Napravnik S, Kirk G, Jacobson L, Brooks JT. Trends in Antiretroviral Therapy Use, HIV RNA Plasma Viral Loads and CD4 T-Lymphocyte Counts among HIV-Infected Persons in Care in the United States, 2000-2008. *Ann Intern Med*. Sept 4 2012;157(5): 325-335.
13. Chao C, Leyden WA, Xu L, **Horberg MA**, Klein D, Towner WJ, Quesenberry CP, Jr., Abrams DI, Silverberg MJ. Exposure to antiretroviral therapy and risk of cancer in HIV-infected persons. *AIDS*. Aug 28. 2012 [e-pub ahead of print].
14. Chao C, Tang B, Towner W, Silverberg MJ, Hurley L, **Horberg M**. Short-term clinical outcomes among treatment-experienced HIV-positive patients with early low level viremia. *AIDS Patient Care STDS*. May 2012;26(5):253-255.
15. Chao C, Tang B, Hurley L, Silverberg MJ, Towner W, Preciado M, **Horberg M**. Risk Factors for Short-Term Virologic Outcomes Among HIV-Infected Patients Undergoing Regimen Switch of Combination Antiretroviral Therapy. *Clinical Medicine & Research*. 2012;10(3):156.
16. Delorenze GN **Horberg MA**, Silverberg MJ, Tsai A, Quesenberry CP, Baxter R. Trends in annual incidence of methicillin-resistant Staphylococcus aureus (MRSA) infection in HIV-infected and HIV-uninfected patients. *Epidemiol Infect*. Feb 18 2013:1-11 [Epub ahead of print].
17. Glasgow RE, **Gaglio B**, Bennett G, Jerome GJ, Yeh HC, Sarwer DB, Appel L, Colditz G, Wadden TA, Wells B. Applying the PRECIS Criteria to Describe Three Effectiveness Trials of Weight Loss in Obese Patients with Comorbid Conditions. *Health Serv Res*. Jun 2012;47(3 Pt 1):1051-1067.
18. Goldsweig AM, Reid K, Tang F, Fang MC, Maddox TM, Chan PS, Cohen DJ, **Chen J**. Contemporary use of dual anti-platelet therapy for preventing cardiovascular events (Submitted).
19. Graetz I, Reed M, **Fung V**, Dow WH, Newhouse JP, Hsu J. COBRA ARRA Subsidies: Was the Carrot Enticing Enough? *Health Serv Res*. Apr 19 2012: [E-pub ahead of print].
20. Habel LA, Ray GT, Silverberg MJ, **Horberg M**, Yawn BP, Castillo A, Quesenberry CP, Jr., Li Y, Saddier P, Tran TN. The Epidemiology of Herpes Zoster in Patients with Newly Diagnosed Cancer. *Cancer Epidemiol Biomarkers Prev*. Nov 1 2012 [Epub ahead of print].
21. Hanna DB, Buchacz K, Gebo KA, Hessel NA **Horberg MA**, Jacobson LP, Kirk GD, Kitahata MM, Korthuis PT, Moore RD, Napravnik S, Patel P, Silverberg MJ, Sterling TR, Willig JH, Lau B, Althoff KN, Crane HM, Collier AC, Samji H, Thorne JE, Gill MJ, Klein MB, Martin JN, Rodriguez B, Rourke SB, Gange SJ. Trends and Disparities in Antiretroviral Therapy Initiation and Virologic Suppression Among Newly Treatment-Eligible HIV-Infected Individuals in North America, 2001-2009. *Clin Infect Dis*. Feb 12 2013 [Epub ahead of print].

# Published Manuscripts Cont.

(Since Last Issue 05-01-12)

22. Hansen C, Desai S, **Bredfeldt C**, Cheetham C, Gallagher M, Li DK, Raebel MA, Riedlinger K, Shay DK, Thompson M, Davis RL. A large population-based study of pandemic influenza A H1N1 diagnosis during pregnancy and maternal and neonatal outcomes. *J Infect Dis.* 2012 Oct;206(8):1260-8.
23. Henke RM, **Maeda JL**, Marder WD, Friedman BS, Wong HS. Medicare and commercial inpatient use: Impact of hospital competition. *Web Exclusive American Journal of Managed Care* (In Press).
24. Justice A, Modur S, Tate J, Athoff K, Jacobson L, Gebo K, Kitahata M, **Horberg M**, Brooks JT, Buchacz K, Rourke S, Rachalis A, Napravnik S, Eron J, Saag MS, Moore RD, Kirk G, Bosch R, Rodriguez B, Hogg R, Thorne J, Goedert J, Klein M, Gill MJ, Deeks S, Sterling T, Anastos K, Gange S. The VACS Index Accurately Predicts Mortality among 15, 901 HIV-Infected Individuals in North America on Antiretroviral Therapy. *J Acquir Immune Defic Syndr* (In Press).
25. Kranz G, **Shamim EA**, Lin PT, Kranz GS, M. H. Long Term Depression - like plasticity of the blink reflex for the treatment of blepharospasm. *Movement Disorders.* 2012 (In Press).
26. Krumholz HM, Lin Z, Keenan PS, **Chen J**, Ross JS, Drye EE, Bernheim SM, Wang Y, Bradley EH, Han LF, Normand SL. Relationship between hospital readmission and mortality rates for patients hospitalized with acute myocardial infarction, heart failure, or pneumonia. *JAMA.* Feb 13 2013;309(6):587-593.
27. Mazor KM, **Gaglio B**, Nekhlyudov L, Alexander GL, Stark A, Hornbrook MC, Walsh K, Boggs J, Lemay C, Firreno C, Biggins C, Blosky MA, Arora NK. Assessing patient-centered communication in cancer care: Stakeholder perspective. *Journal of Oncology Practice.* 2013 (In Press).
28. Mazor KM, Rogers HJ, Williams AE, Roblin DW, **Gaglio B**, Field TS, Greene SM, Han PK, Costanza ME. The cancer message literacy tests: Psychometric analyses and validity studies. *Patient Educ Couns.* 2012;89(1):69-75.
29. Mazor KM, Roblin DW, Williams AE, Greene SM, **Gaglio B**, Field TS, Costanza ME, Han PK, Saccoccio L, Calvi J, Cove E, Cowan R. Health literacy and cancer prevention: Two new instruments to assess comprehension. *Patient Educ Couns.* Jul 2012;88(1):54-60.
30. Neta G, **Yu CL**, Brenner A, Gu F, Hutchinson A, Pfeiffer R, Sturgis E, Xu L, Linet S, Alexander B, Chanock S, A.J. S. Common Genetic Variants in the 8q24 Region and Risk of Papillary Thyroid Cancer. *Laryngoscope.* May 2012;122(5):1040-1042.
31. Pine M, Sonneborn M, Schindler J, Stanek M, **Maeda JL**, Hanlon C. Harnessing The Power of Enhanced Data for Healthcare Quality Improvement: Lessons from a Minnesota Hospital Association Pilot Project. *Journal of Healthcare Management Nov/Dec 2012* 57(6): 406-418.
32. Reed ME, Graetz I, **Fung V**, Newhouse JP, Hsu J. In consumer-directed health plans, a majority of patients were unaware of free or low-cost preventive care. *Health Aff (Millwood).* Dec 2012;31(12):2641-2648.
33. Reed M, Graetz I, Wang H, **Fung V**, Newhouse JP, Hsu J. Consumer-directed Health Plans With Health Savings Accounts: Whose Skin is in the Game and How do Costs Affect Care Seeking? *Med Care.* Feb 8 2012 [Epub ahead of print].
34. Rebeiro P, Althoff KN, Buchacz K, Gill MJ, **Horberg M**, Krentz H, Moore RD, Sterling T, Brooks JT, Gebo K, Hogg R, Klein M, Martin J, Mugavero M, Rourke S, Thorne J, Gange S. Retention among North America HIV-Infected Persons in Clinical Care, 2000-2008. *Clinical Infectious Diseases* [Epub ahead of print].
35. Ritzwoller DP, Sukhanova AS, Glasgow RE, Strycker LA, King DK, **Gaglio B**, Toobert DJ. Intervention costs and cost-effectiveness for a multiple-risk-factor diabetes self-management trial for Latinas: economic analysis of inverted economic analysis of Viva Bien! *Transl Behav Med. Sep 1 2011; 1 (3): 427-435.*
36. Schwarz EB, Postlethwaite D, Hung YY, Lantzman E, Armstrong MA, **Horberg MA**. Provision of Contraceptive Services to Women with Diabetes Mellitus. *J Gen Intern Med.* Feb 2012;27(2):196-201.
37. Silverberg M, Leyden W, Stewart C, Ralston J, **Horberg M**, Carzasty S, Grothaus L, Catz S, Change in adherence to antiretrovirals after initial use of an electronic shared medical record among HIV-Infected individuals. *Clinical Medicine & Research,* 2012; 10(3): 144-145.
38. Towner WJ, Xu L, Leyden WA, **Horberg MA**, Chao CR, Tang B, Klein DB, Hurley LB, Quesenberry CP, Jr., Silverberg MJ. The Effect of HIV Infection, Immunodeficiency, and Antiretroviral Therapy on the Risk of Hepatic Dysfunction. *J Acquir Immune Defic Syndr.* Jul 1;60(3):321-327.

# Abstracts Presented

(Since Last Issue 05-01-12)

1. **Bredfeldt CE**, Bayliss E, Dickman J, Karter A, Moffet H, Adams A. Challenges in assessing the quality of patient reported outcomes: Diabetic Peripheral Neuropathy. *AcademyHealth's 2012 Annual Research Meeting*. Orlando, FL; June 2012.
2. **Chen J**, Wang H, Fazel R, Normand SL, Bradford D, Mouaz AM, Cohen DJ, Spettell C, Fernandez J, Shaw L, Krumholz HM, Nallamothu BK. Does higher use of non-invasive testing improve the diagnostic yield of coronary aigraphy? *AHA QCOR Scientific Sessions*. Baltimore, MD; May 2013.
3. **Chen J**, Long J, Hurria A, Owusu C, Steingart R, Gross C. Early termination of adjuvant Trastuzumab associated with cardiovascular events in older women with breast cancer. *AHA*. Los Angeles, CA; November 2012.
4. **Chen J**. "Comparative Effectiveness Studies in Cardiovascular Imaging.". *Society for Nuclear Medicine Scientific Sessions* Miami FL; 2012, June 10. (Talk)
5. **Chen J**. "Comparative Effectiveness Studies in Cardiovascular Imaging." *Medical College of Wisconsin, Cardiology Grand Rounds.*; 2012, June 7. (Talk)
6. **Chen J**. "A Million Hearts: Can we meet the challenge?" and "NHLBI Center for Cardiovascular Outcomes Research at Yale University". *American Heart Association Quality of Care and Outcomes Research 2012 Scientific Sessions*. Atlanta, GA; 2012, May 10. (Talk)
7. **Chen J**, Long J, Hurria A, Owusu C, Steingart R, Gross C. Incidence of heart failure or cardiomyopathy after adjuvant Trastuzumab therapy for breast cancer: A SEER-Medicare analysis. *ACC*. Chicago, IL.; March 2012.
8. **Fung V**, Price M, Busch AB, Landrum MB, Fireman B, Nierenberg A, Dow WH, Frank R, Newhouse J, Hsu J. Misalignment of Benefit Design and clinical goals: Antipsychotic Drugs and Medicare Beneficiaries. *AcademyHealth Annual Research Meeting*. Orlando, FL; June 2012.
9. **Fung V**, Price M, Busch AB, Landrum MB, Nierenberg A, Dow W, Fireman B, Hui R, Frank R, Newhouse J, Hsu J. Medicare Part D Cost-sharing and Antipsychotic Drug Use Among Beneficiaries with Schizophrenia. *American Society for Health Economists, Biennial Meeting*. Minneapolis; June 2012 .
10. **Gaglio B**, Rabin BA, Goetz P, Shoup JA, Martin C, Henton M, Mazor K, Street R. Evaluation of the National Coalition for Cancer Survivorship - Cancer Survival Toolbox®: A mixed methods approach. *The 19th Annual HMORN Conference*. San Francisco, CA; April 2013.
11. **Horberg M**, Hurley L, Towner W, Allerton M, Tang B, Catz S, Silverberg M, Quesenberry C. Impact on emergency department (ED) and hospitalization utilization among optimized multidisciplinary care teams associated with maximal antiretroviral adherence. *7th International Conference on Treatment and Prevention Adherence*. Miami Beach, FL; June 2012.
12. **Maeda JL**, Henke RM, Marder WD, Friedman BS, Wong HS. Factors Influencing the Variation in Hospital Inpatient PReices between Public and Private Payers. *ISPOR 17<sup>th</sup> Annual International Meeting, May 2013 (poster presentation)*
13. **Maeda JL**, Henke RM, Ehrlich E, Marder WD, Friedman BS, Wong HS. Factors Impact of Primary Care Availability on Hosptial Inpatient Use by Insurance Status. *ISPOR 17<sup>th</sup> Annual International Meeting, May 2013 (poster presentation)*
14. **Yu CL**, Bhatti P, Ha M, Rajaraman P, Linet M, Hutchinson A, Alexander B, Doody M, Chanock S, Sigurdson A. Interactions between common genetic variants and cigarette smoking before first pregnancy with breast cancer risk in U.S. radiologic technologists. *Annual Meeting- Society for Epidemiologic Research*. Minneapolis, MN; June 2012.
15. Abraham A, Lau B, Estrella M, Szczeck L, Rourke S, Rodriguez B, Rachalis A, Chirag P, Napravnik S, Moore R, Klein M, Kitahata M, Jing J, **Horberg M**, Harris M, Eron J, Crane H, Bosch R, Benson C, Anastos K, Althoff K, Lucas G. Tenofovir-Associated kidney function decline with a PI-based versus NNRTI-based regimen. *XIX International AIDS Conference*. Washington, DC July 2012
16. Althoff K, Buchacz K, Hall I, Zhang J, Hanna D, Rebeiro P, Gange S, Moore R, Kitahata M, Gebo K, Martin J, Justice A, **Horberg M**, Hogg R, Sterling T, Cescon A, Klein M, Thorne J, Crane H, M M, Napravnik S, Kirk G, Jacobson L, Rodriguez B, Brooks J. Trends in Antiretroviral Therapy use, HIV RNA plasma viral load, and CD4 T-lymphocyte counts at death among HIV-infected persons in care in the United States, 2000-2008. *XIX International AIDS Conference*. Washington, DC; July 2012 .
17. Althoff K, Rebeiro P, Gill M, **Horberg M**, Eron J, Napravnik S, Anastos K, Bosch R, Moore R, Gange S. Trends in HIV viral load among adults in clinical care in the US and Canada, 1997-2007. *19th Conference on Retroviruses and Opportunistic Infections*; March 2012.
18. Catz S, Amico K, Baltderson B, Hogan P, **Horberg M**, Mahoney C, McClure J, Silverberg M, Ralston J. Individually tailoring a health information technology adherence intervention using patient-reported web survey responses. *7th International Conference on Treatment and Prevention Adherence*. Miami Beach, FL; June 2012.

# Abstracts Presented Continued

(Since Last Issue 05-01-12)

19. Hanna D, Buchacz K, Hessel N, **Horberg M**, Jacobson L, Kitahata M, Moore R, Napravnik S, Patel P, Gebo K, Willig J, Sterling T, Kirk G, Collier A, Ohl M, Thorne J. Trends in Antiretroviral Therapy initiation and virologic suppression among newly clinically-eligible HIV-infected individuals in North America, 2001-2009. *XIX International AIDS Conference* Washington, DC July 2012.
20. Hanna D, Buchacz K, Hessel N, **Horberg M**, Jacobson L, Kitahata M, Moore R, Napravnik S, Patel P, Gebo K, Willig J, Sterling T, Kirk G, Collier A, Ohl M, Thorne J, Gange S. Association between state AIDS drug assistance program features and treatment initiation in clinically eligible US HIV-infected persons. *XIX International AIDS Conference*. Washington, DC; July 2012.
21. Hsu J, Price M, **Fung V**, Dow W, Newhouse J. Non-linear Cost-sharing and Projected Drug Burden: Adherence to Chronic Drug Regimens in the Medicare Part D Program. *American Society for Health Economists, Biennial Meeting*. Minneapolis; June 2012.
22. Mazor K, Roblin D, Williams A, Han P, Costanza M, Cutrona S, Field T, Greene S, **Gaglio B**, Wagner J, Robinson B, Vijayadeva V. Health literacy and cancer prevention: It's not what you say it's what they hear. *The 19th Annual HMORN Conference*. San Francisco, CA; April 2013.
23. Meenan R, **Horberg M**, Silverberg M, Chao C, Williams A, Vogt T, Antoniskis D, Towner W, Keast E, Leyden W, Xu L, Vijayadeva V. Developing new quality measures for HIV care using the electronic medical record. *XIX International Aids Conference*. Washington, DC; July 2012.
24. Owrang O MM, **Hosseinkhah F**. Association rules mining for breast cancer survivability prediction. *International conference on computers and their applications*. Honolulu, HI; March 2013.
25. Rabin BA, **Gaglio B**, Sanders T, Nekhlyudov L, Marcus A, Bull S, Dearing JW. Communication of prognostic information with cancer patients in four diverse healthcare settings. *The 19th Annual HMORN Conference*. San Francisco, CA; April 2013.
26. Rabin BA, **Gaglio B**, Sanders T, Nekhlyudov L, Marcus A, Bull S, Dearing JW. A systematic review of web-based cancer prognostic calculators: can they support patient-centered communication with cancer patients? *The 19th Annual HMORN Conference*. San Francisco, CA; April 2013.
27. Rebeiro P, Althoff K, Gill J, Krentz H, Gebo K, Martin J, **Horberg M**, Hogg R, Thorne J, Klein M, Rourke S, Sterling T, Moore R, Gange S. Patterns and predictors of absences from HIV care in North America (2000-2008). *XIX International AIDS Conference*. Washington DC; July 2012.
28. Rebeiro P, Althoff K, Gill J, Krentz H, Gebo K, Martin J, **Horberg M**, Hogg R, Thorne J, Klein M, Sterling T, Moore R, Gange S. Modeling clinical retention in the north American HIV population. *2012 Society for Epidemiologic Research*. Minneapolis, MN; June 2012.
29. Richter J, McFarland L, **Yu CL**, The flow of Tumor Data: A Technical review of tumor data production, submission, and use. *HMORN Annual Conference* Seattle, WA; April 2012.
30. Richter J, McFarland L, **Yu CL**, The evolution of tumor standards and its effect on observational data. *The 19th Annual HMORN Conference*. San Francisco, CA; April 2013. [Submitted]
31. Silverberg M, Leyden W, Stewart C, Ralston J, **Horberg M**, Carzasty S, Grothaus L, Catz S. Change in adherence to antiretrovirals after initial use of an electronic share medical records among HIV-infected individuals. *HMO Research Network Conference*. Seattle, WA; April 2012.